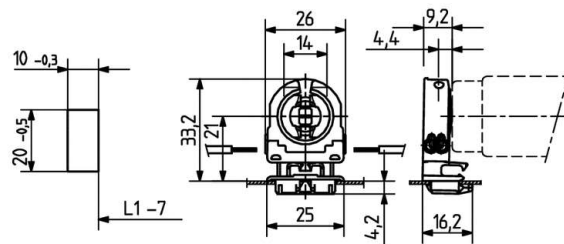


 Create pdf

Lampholders and starter holders

26.308.1021

G13 Push in lampholders



L1-7: Recommended dimension - The distance between the cut-outs and the tolerance should be governed by the dimensions of the respective lamps and luminaires.

colour	pkg.	wt.	part no.
white	500	7 g	26.308.1021.50



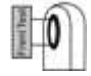



Approval: additional cULus (660W /600V)

Wiring: side entry wiring

Lamp centre: 21 mm
Snap in foot 10 x 20 mm

Housing: PC
Rotor: PBT

- With cable support
- With snap in foot and closed base, IP 40
- A pair of lampholders provides a lamp length tolerance compensation of 3 mm

T 130	Tm110	U out 500 V					 18 AWG 0.5 -1.0 mm ²	 0.5 - 1.1
-------	-------	----------------	---	---	--	---	---	--

Document generated on: Th, 9. February 2017 - 13:24